



# SUSTAINABLE GROUNDWATER MANAGEMENT ACT OVERVIEW

## WHAT IS THE SUSTAINABLE GROUNDWATER MANAGEMENT ACT?

In 2014, the State of California (State) enacted the Sustainable Groundwater Management Act (SGMA) to support the sustainable management of groundwater resources. SGMA requires the formation of local Groundwater Sustainability Agencies (GSA) to manage groundwater basins and subbasins and to develop Groundwater Sustainability Plans (GSP) to help ensure long-term groundwater sustainability. SGMA recognizes local oversight may lead to better outcomes by aligning groundwater management with regional goals, hydrogeologic conditions, and community needs.

## DID YOU KNOW?




The Yolo Subbasin Groundwater Agency (YSGA) GSP sets minimum thresholds for each of the following sustainability indicators:

- Chronic lowering of groundwater levels
- Reduction in groundwater storage
- Degraded water quality
- Land subsidence
- Depletion of interconnected surface water

## DOES SGMA RESTRICT GROUNDWATER PUMPING?

SGMA allows the State Water Resources Control Board (SWRCB) to intervene if sustainability indicators drop below established minimum thresholds. In such cases, the SWRCB may impose pumping fees (currently \$300 per well and \$40 per acre-foot of groundwater pumped) on top of any existing GSA fees and may also set pumping limits. (See Table 1 for an example of SWRCB pumping fees for a 40-acre farm.) These State-imposed fees are expected to rise over time. The State uses all revenue from these fees to fund State intervention activities, not local projects that help slow the decline of groundwater resources. State intervention typically focuses on reducing groundwater demand to achieve sustainability.

## COST OF STATE INTERVENTION FOR A 40-ACRE FARM

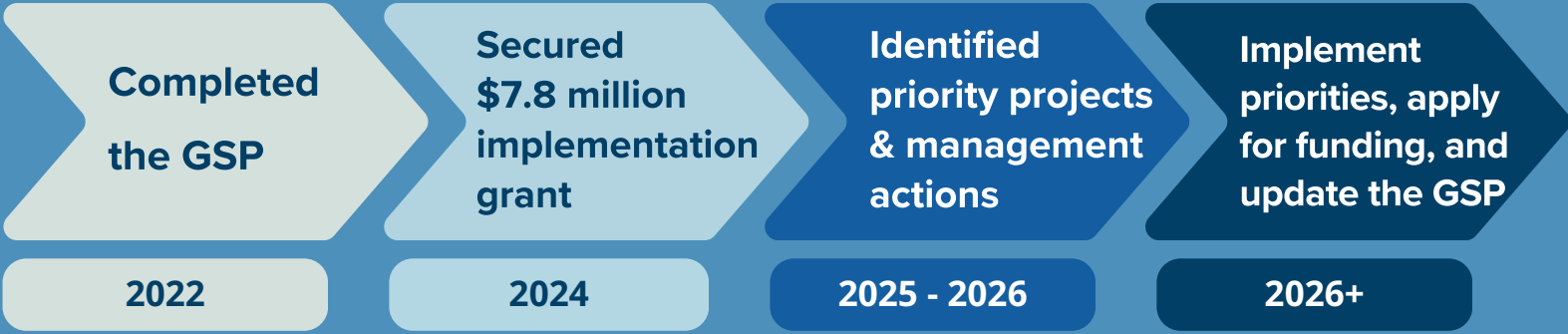
CROP TYPE	1 YEAR	5 YEARS
 <b>ALMOND</b>	40 acres x 3.8 af/ac x \$40/af + \$300 = <b>\$6,380</b>	<b>\$31,900</b> (plus meter)
 <b>TOMATO</b>	40 acres x 2 af/ac x \$40/af + \$300 = <b>\$3,500</b>	<b>\$17,500</b> (plus meter)
 <b>SUNFLOWER</b>	40 acres x 0.75 af/ac x \$40/af + \$300 = <b>\$1,500</b>	<b>\$7,500</b> (plus meter)



# YOLO SGMA GOVERNANCE

After the passage of SGMA, the Water Resources Association of Yolo County (WRA) partnered with the Yolo County Farm Bureau to organize local agencies with groundwater authority. This collaborative effort resulted in a GSA formation, known as the Yolo Subbasin Groundwater Agency (YSGA), that is a joint powers agency responsible for developing and implementing the Yolo Subbasin GSP.

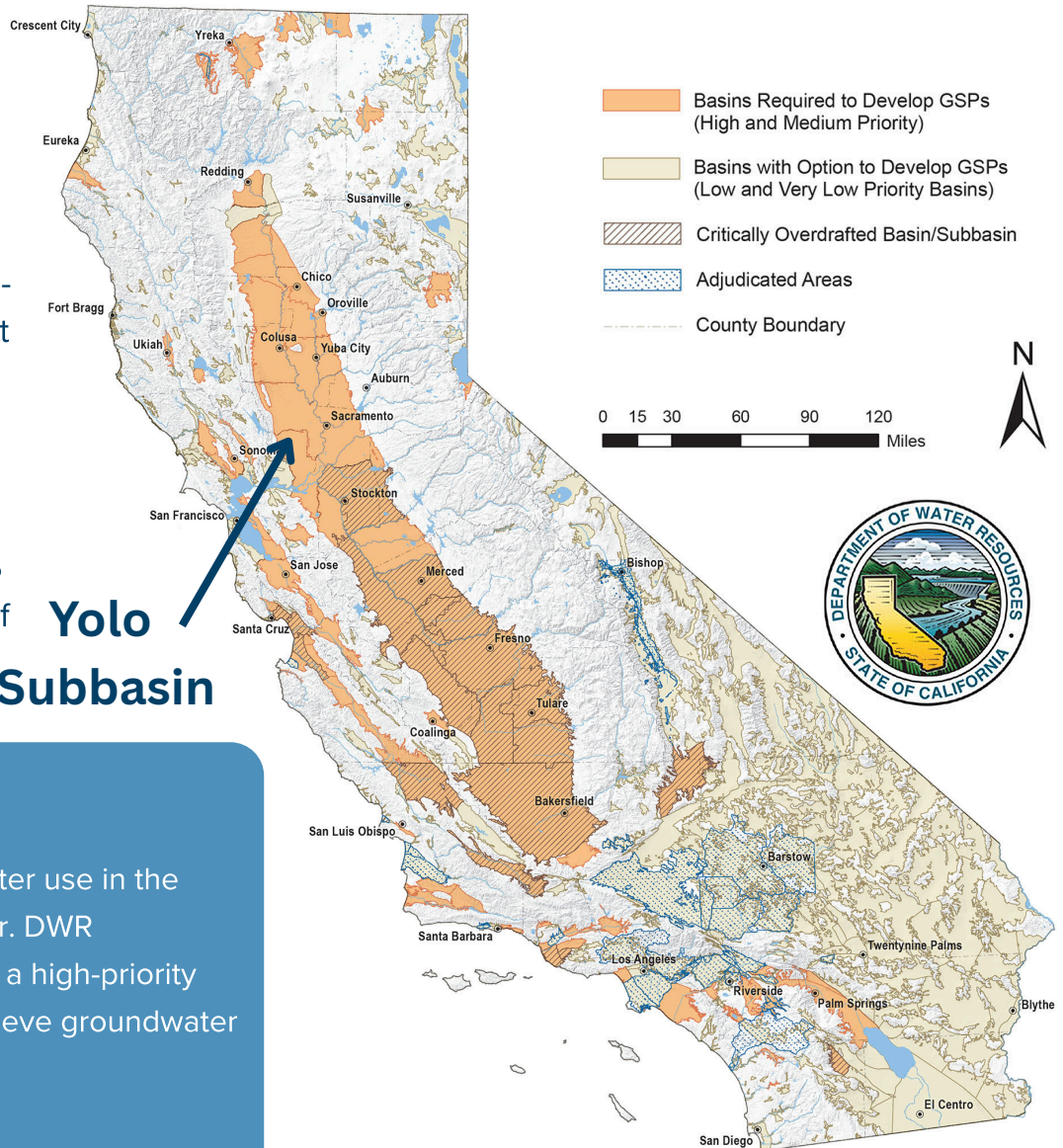
## YOLO SUBBASIN GROUNDWATER AGENCY ACTIONS



## CALIFORNIA'S GROUNDWATER BASINS

The California Department of Water Resources (DWR) identified 94 high- and medium-priority groundwater basins that are subject to SGMA through several basin prioritization efforts, which account for 98% of pumping (20 million acre-feet), 83% of the population (25 million Californians), and 88% of all irrigated acres (6.7 million acres).

**Yolo Subbasin**



## DID YOU KNOW?

According to the DWR, 34% of water use in the Sacramento Valley is groundwater. DWR categorized the Yolo Subbasin as a high-priority subbasin and the YSGA must achieve groundwater sustainability by 2042.